



THE ELEMENTS FLATS

**THE ECLIPSE**

BUILDING 7 UNIT 101

1209 sq. ft. + 104 sq.ft. balcony

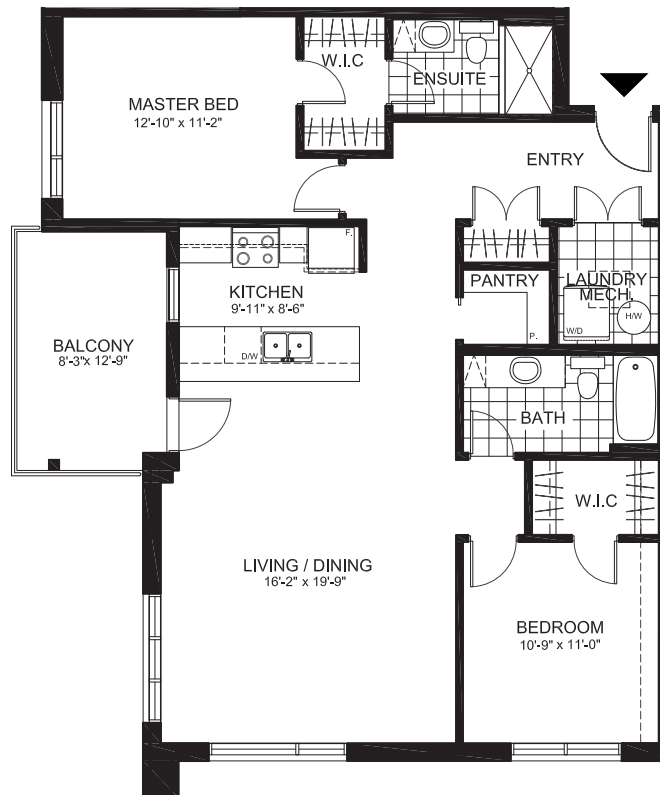
2 Bedrooms | 2 Bathrooms

Price: \$392,000

EARLY OCCUPANCY

AVAILABLE IMMEDIATELY

GROUND FLOOR





THE ELEMENTS FLATS

**THE ECLIPSE**

BUILDING 7 UNIT 101

1209 sq. ft. + 104 sq.ft. balcony

2 Bedrooms | 2 Bathrooms

Price: \$392,000

EARLY OCCUPANCY

AVAILABLE IMMEDIATELY

HOME INCLUDES OVER **\$8,700.00** IN UPGRADES AND CUSTOMIZATIONS:

KITCHEN AND MILLWORK ADJUSTMENTS

INTERIOR FINISHES

- 3 1/4" stained prefinished solid oak hardwood in standard areas
- Main bath stone solid surface counter c/w rectangular undermount sink
- Ensuite shower wall tile upgrade
- Kitchen & Ensuite cabinets solid colour lacquer

ELECTRICAL UPGRADES

- Add (4) pot lights in Living Room on existing switch

PLUMBING & HVAC

- Double bowl kitchen sink & waterline rough-in at fridge

Appliances

- Standard stainless steel appliance package included

\*Please note: price includes house/lot all customizations and HST