



Copperwood
Estate KANATA

CONTEMPORARY TOWNHOMES

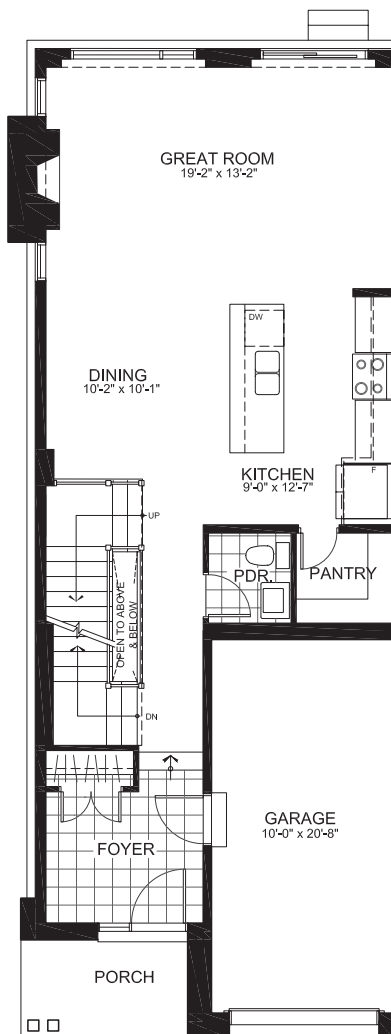
THE DRIFTWOOD

2379 sq. ft.

(includes 498 sq. ft. of finished basement)

3 Bedrooms + Loft | 2.5 Bathrooms

GROUND FLOOR



*Note: Height of front door transoms, number and configuration of steps at front entry or entry from garage and at rear will vary depending on lot specific grading conditions. Elevations and exterior colour package are pre-determined.

*Elevation and floor plans as presented in schedule 'B' are subject to possible variations. Schedule 'B' is to be read in conjunction with clause 'I', completion of dwelling.

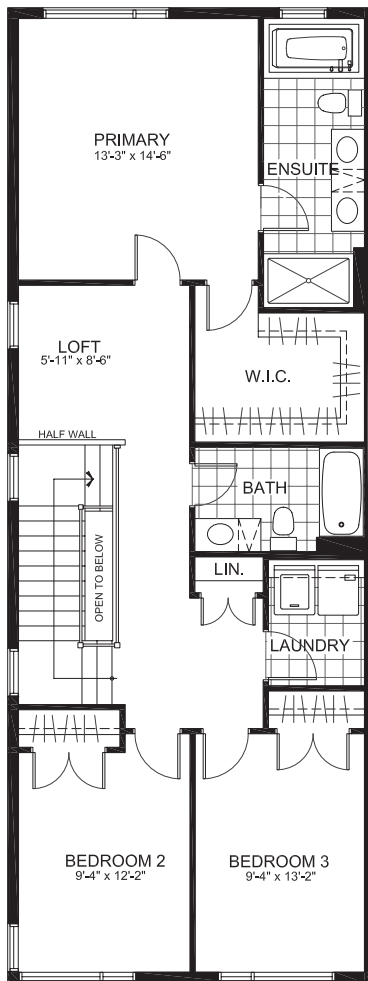
E. & OE

uniform

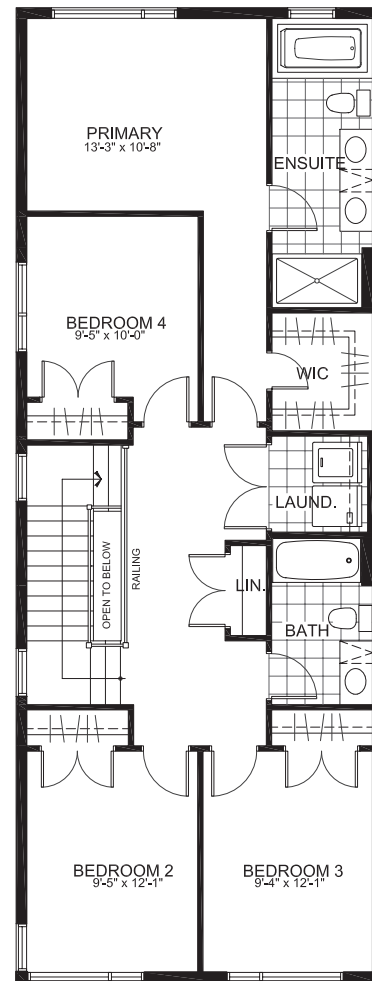


THE DRIFTWOOD

SECOND FLOOR



SECOND ALT



*Note: Height of front door transoms, number and configuration of steps at front entry or entry from garage and at rear will vary depending on lot specific grading conditions. Elevations and exterior colour package are pre-determined.

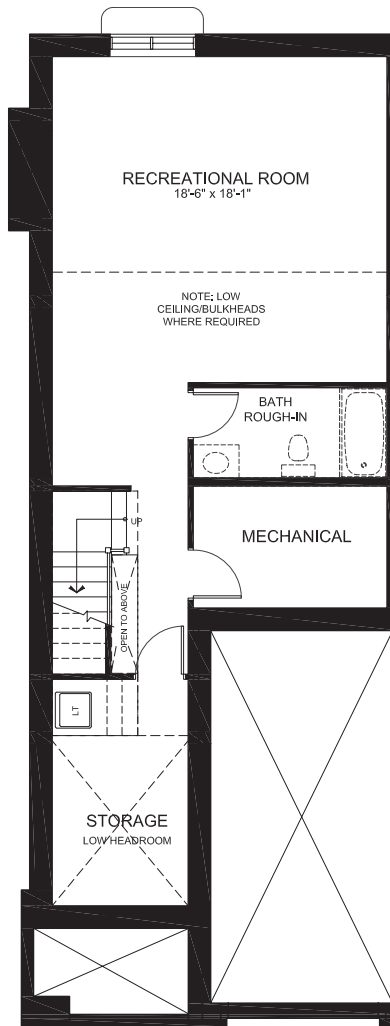
*Elevation and floor plans as presented in schedule 'B' are subject to possible variations. Schedule 'B' is to be read in conjunction with clause 'I', completion of dwelling.



Copperwood
Estate KANATA

THE DRIFTWOOD

BASEMENT



*Note: Height of front door transoms, number and configuration of steps at front entry or entry from garage and at rear will vary depending on lot specific grading conditions. Elevations and exterior colour package are pre-determined.

*Elevation and floor plans as presented in schedule 'B' are subject to possible variations. Schedule 'B' is to be read in conjunction with clause 'I', completion of dwelling.